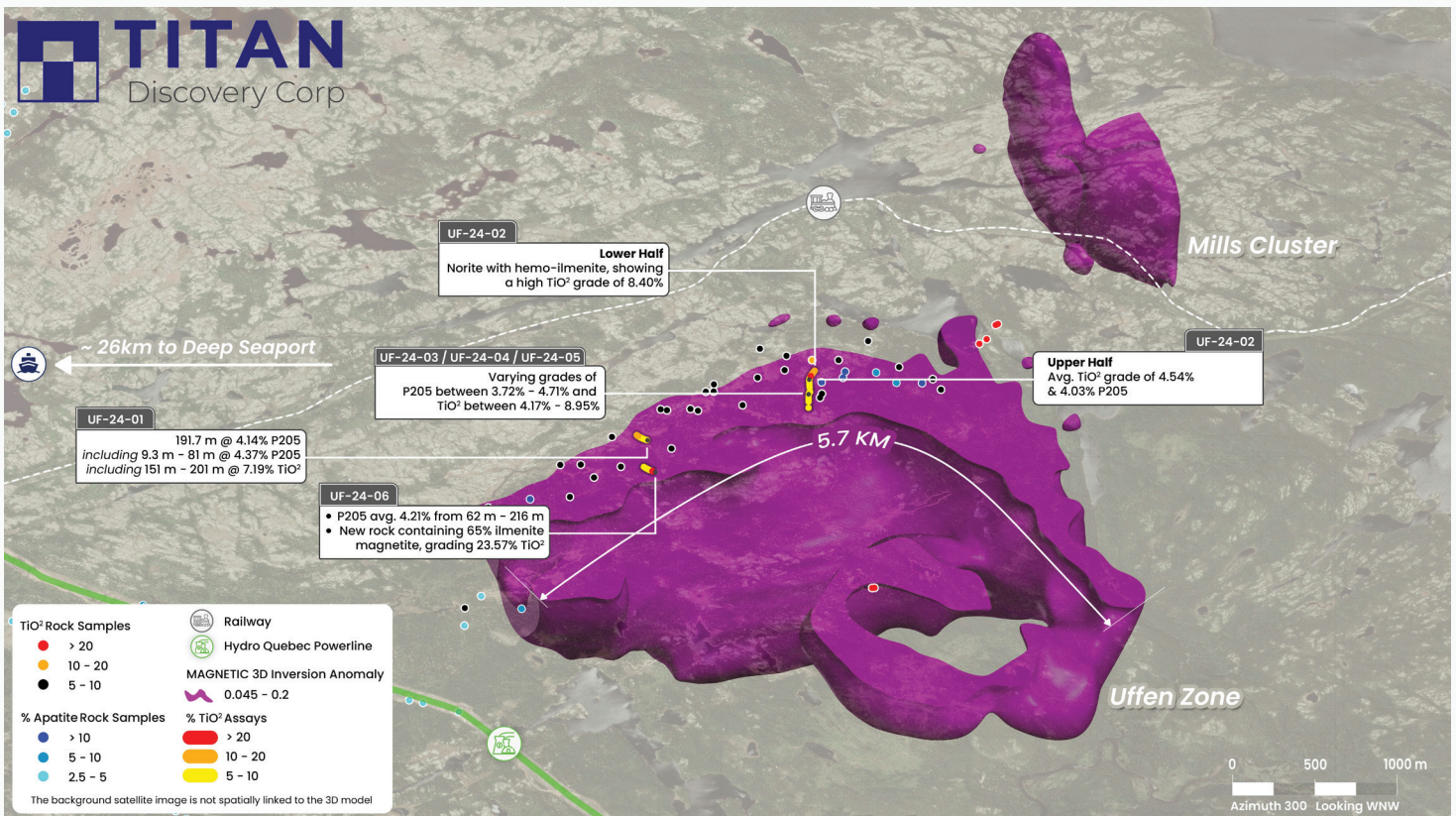


About Titan Discovery

Titan Discovery Corp. ("TDC") is a critical minerals company advancing the Peninsula Project, a strategically significant brownfield development in Quebec, Canada. The project comprises several high-potential zones, with an initial focus on the Uffen Zone, a large, recrystallized titanium-phosphate-iron deposit. Located near the world's largest solid ilmenite deposit, the Lac Tio mine, this project benefits from excellent infrastructure, including low-cost electricity, skilled labor, and proximity to the St. Lawrence Seaway.

Strategic. Sustainable. Growth.

The World's Greenest Titanium, Phosphate, and Iron—One Mine, One Source, Securing the Global Long-Term Supply-Chain.



Successful Management Team

David B. Jackson
Executive Chairman, Co-Founder

Ryan K. Jackson
Director, Co-Founder

Frances Petryshen
Corporate Secretary, Director

Enrico di Cesare
Chief Operating Officer

Richard B. Simmons
Senior Advisor

James A. Turner
Geologist

Peninsula Property

(Flagship Property)

Status:

Advanced Exploration project undergoing resource definition and engineering. Option to own 100%

Deposit:

Exploration potential of over 1bt tonnes with world-class exploration grades of up to 40% TiO₂ and 60% Fe₂O₃T

Uffen Zone

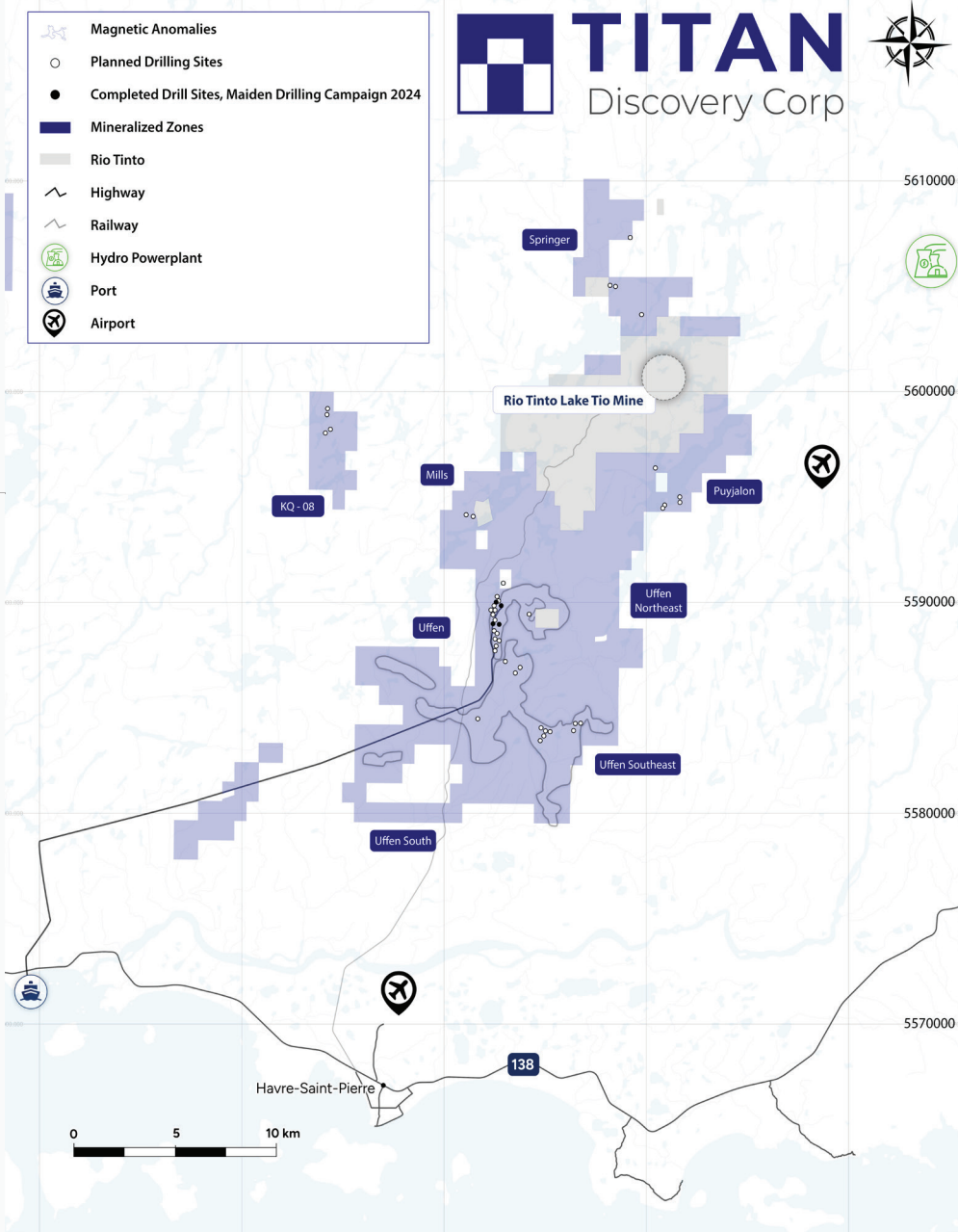
(Exploration Priority at Peninsula Property)

Status:

Maiden Drilling Campaign completed May 2024.

Deposit:

400 Mt recrystallized structure with sampled grades of 11% apatite, 13.45% ilmenite plus scandium, vanadium, & REEs to produce premium 48% TiO₂ and 40% P₂O₅ concentrates



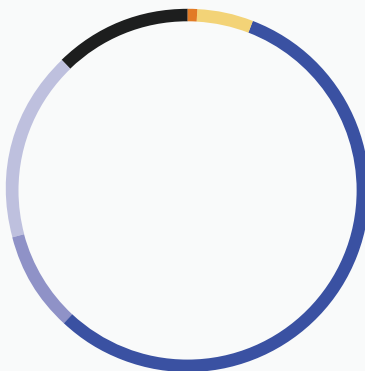
Our Other Properties

Advanced Red Lake Property

Coconipi Property

Lac Couillard Property

Share Structure



■ FT Shares 1%	■ Management & Insiders 56%
■ Series B 5%	■ Property Commitments 9%
■ Series A 12%	■ Friends & Family 17%

Contact Us

Ryan Jackson
+1 778 998 0867
ryan@titandiscovery.com

Gary Perkins
garyperkins@titandiscovery.com

Share Capitalization

Common Shares	80,994,759
Warrants	36,499,016
Common Shares	117,493,775

Warrant Structure

	Units (M)	Term (month)	Price (CAD)	Cash (\$M)
Series A	22.5	60	0.15	3.375
Flow-Through	9.75	36	0.15	1.462
Series B	0.434	24	0.18	0.078
Series B	3.815	24	0.45	1.716